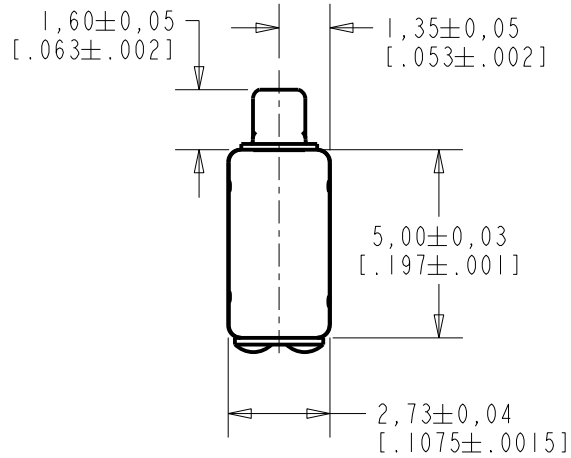
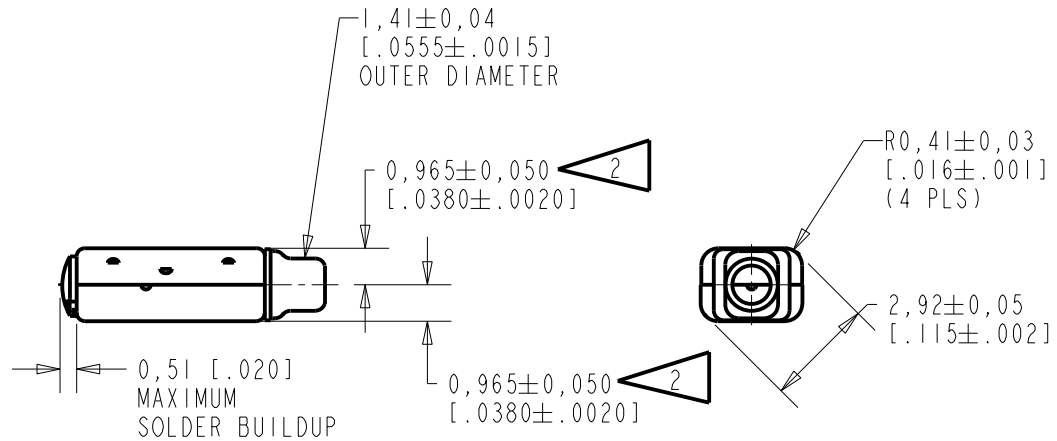
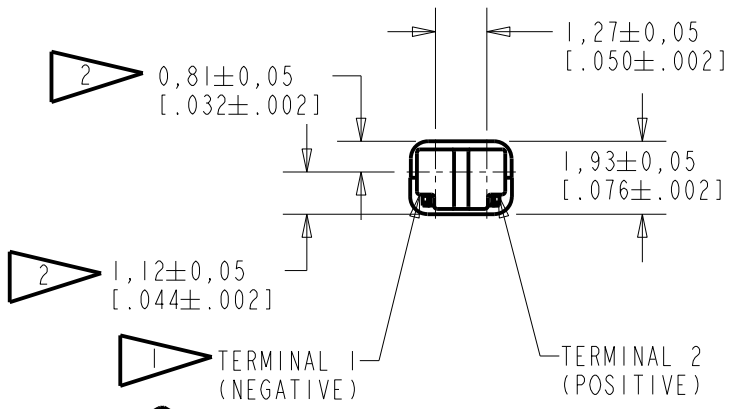


FK-30817-000
SHT 1.1



- NOTES:
- 1 A POSITIVE GOING VOLTAGE AT TERMINAL 2, RELATIVE TO TERMINAL 1, CAUSES A DECREASE IN PRESSURE AT THE SOUND OUTLET.
 - 2 LOCATED FROM TWO SURFACES FOR CUSTOMER CONVENIENCE. ONLY APPLICABLE FROM ONE SURFACE, NOT TO BE USED TOGETHER.



SCALE 2:1
NOMINAL WEIGHT .11 GRAMS
DIMENSIONS IN MILLIMETERS [INCHES]

Revision	C.O. #	Implementation Date	RELEASE LEVEL	REVISION
C	C10114032	11-8-12	Active	C
B	C10111047	3-10-10		
A	C10110432	10-28-09		

KNOWLES ELECTRONICS
ITASCA, ILLINOIS U.S.A.

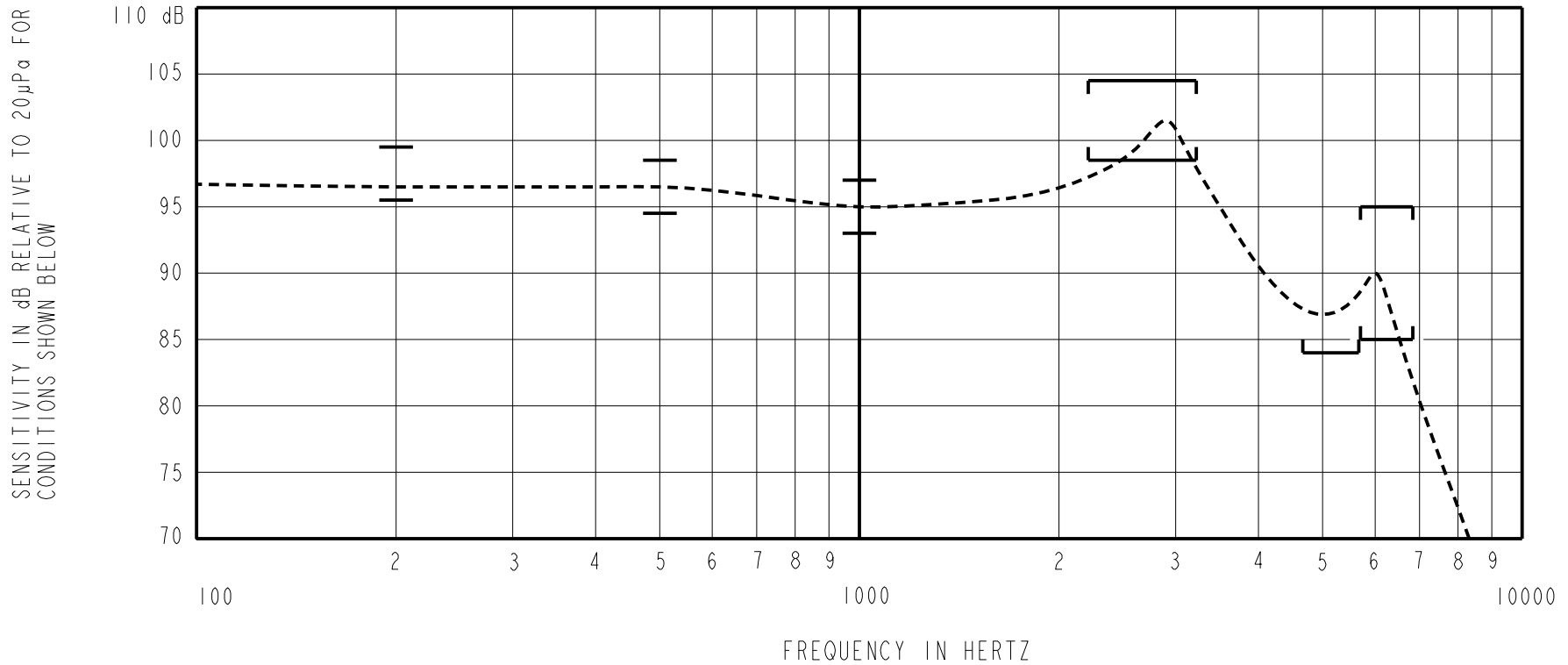
SCALE: 5:1	DR. BY DATE
DO NOT SCALE DRAWING	SDZ 10-28-09
TITLE: RECEIVER	FK-30817-000
OUTLINE DRAWING	SHT 1.1
	CK. BY DATE
	GJP 10-28-09
	APP. BY DATE
	GJP 10-28-09

THIS IS AN UNDAMPED MAGNETIC BALANCED ARMATURE RECEIVER INTENDED FOR USE IN CIC HEARING INSTRUMENTS.

NO DAMPING

FK-30817-000
SHEET 2.1

CONSTANT VOLTAGE DRIVE CONDITIONS



ACOUSTICAL

SENSITIVITY
DEVICE WILL PRODUCE THE SPL LISTED BELOW UNDER TEST CONDITIONS DESCRIBED IN TABLE 3.
NOMINAL SENSITIVITY AT 1kHz IS dB RELATIVE TO 20µPa. ALL OTHER VALUES
IN dB RELATIVE TO THE SENSITIVITY AT 1kHz.

FREQUENCY (Hz)	MINIMUM	NOMINAL	MAXIMUM
200	+0.5	+1.5	+4.5
500	-0.5	+1.5	+3.5
1000	-2.0	95.0	+2.0
2250 - 3250	+3.5	+6.5	+9.5
4650 - 5650	-11.0	---	---
5700 - 6700	-10.0	-5.0	0.0

PORT LOCATION: 12S

TABLE 1
TOTAL HARMONIC DISTORTION
DEVICE WILL NOT EXCEED TOTAL HARMONIC DISTORTION LEVELS LISTED BELOW.

FREQUENCY (Hz)	AC DRIVE (V rms)	DC BIAS (mA)	LIMIT (%)
920	0.11	0	5
1380	0.11	0	5
920	0.31	0	10

TABLE 2

TEST CONDITIONS

NOMINAL SOURCE VOLTAGE	0.11 V rms, 0 mA DC BIAS
SOURCE IMPEDANCE	<1 Ohm
TUBING	10mm [.394"] LONG, 1mm [.039"] I.D.
COUPLER CAVITY	2 CM ³ , SIMULATED ANSI S3.7 TYPE HA-3 (IEC 60318-5)

TABLE 3

ELECTRICAL

DC RESISTANCE	50 Ohms ± 10%
IMPEDANCE @ 500 Hz	64 Ohms ± 15%
IMPEDANCE @ 1kHz	88 Ohms ± 15%

TABLE 4

ISOLATION: CASE WILL BE ELECTRICALLY ISOLATED FROM THE COIL CIRCUIT.

Revision	C.O. #	Implementation Date	RELEASE LEVEL	REVISION
C	C10114032	11-8-12	Active	C
B	C10111047	3-10-10		
A	C10110432	10-28-09		
WHEN TEST LIMITS ARE USED TO ESTABLISH INCOMING INSPECTION ACCEPTANCE/REJECTION CRITERIA, CORRELATION OF TEST EQUIPMENT WITH KNOWLES IS ALSO REQUIRED FOR ELIMINATION OF EQUIPMENT AND TEST METHOD VARIATION			DR. BY	DATE
TITLE: RECEIVER PERFORMANCE SPECIFICATION			SDZ	10-28-09
			FK-30817-000	
SHT 2.1			CK. BY	DATE
			GJP	10-28-09
GJP			APP. BY	DATE
			GJP	10-28-09

KNOWLES ELECTRONICS
ITASCA, ILLINOIS U.S.A.